

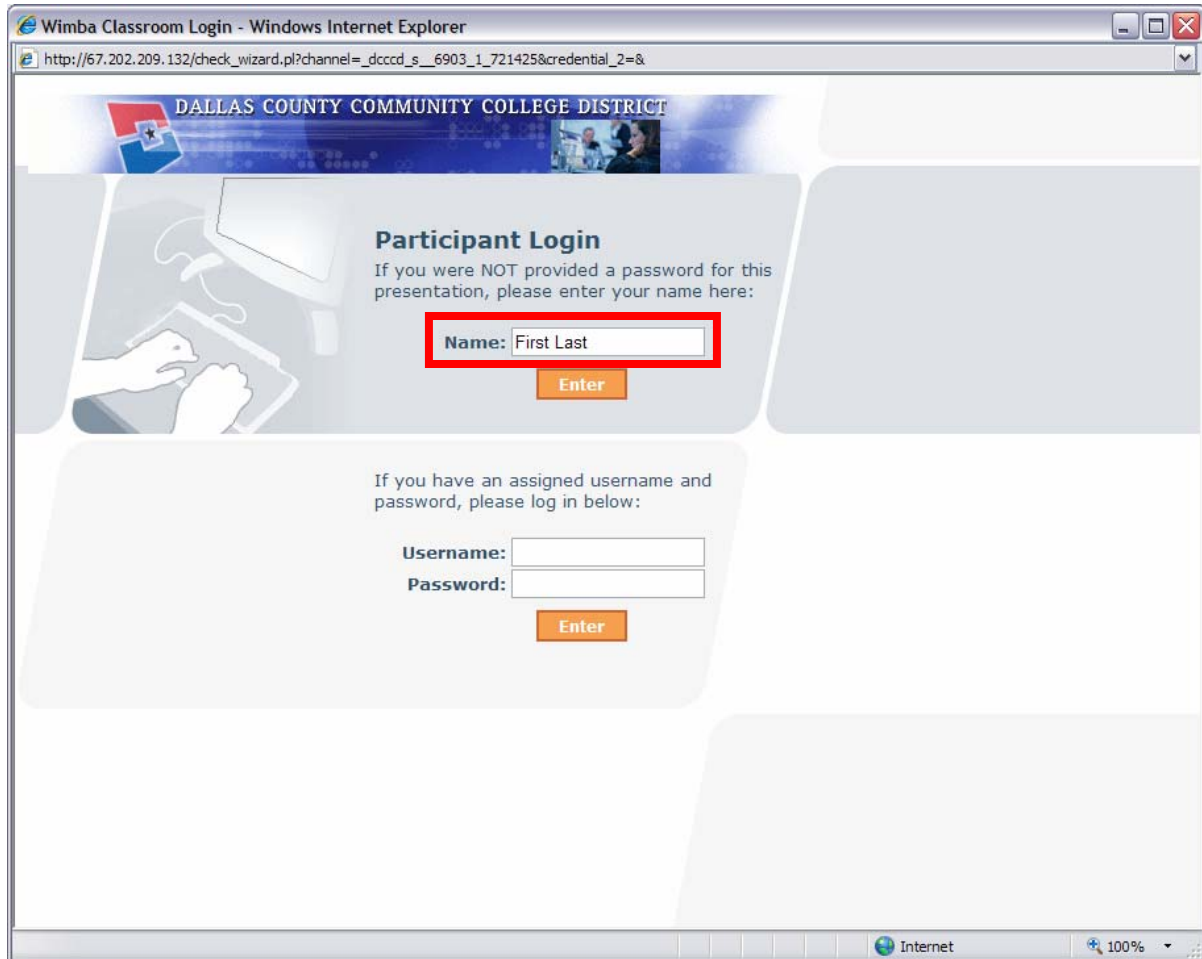
Wimba Classroom

Welcome to the Wimba Classroom. You will receive an e-mail with a link to a classroom and these instructions should help you access and use that classroom.

The link will look something like this:

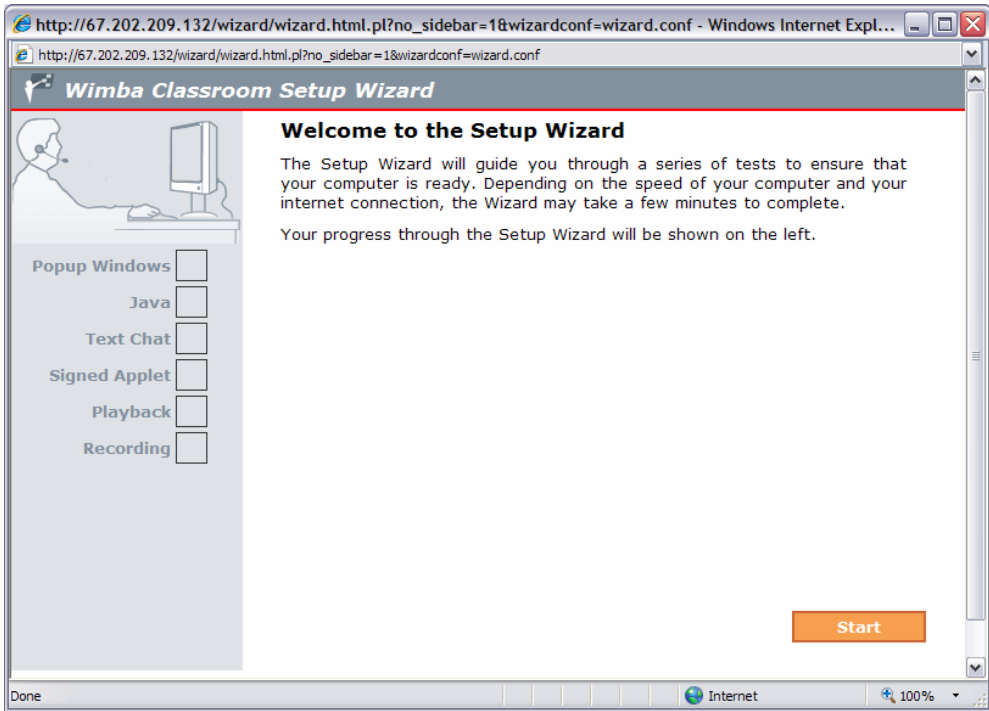
http://dcccd.horizonwimba.com/launcher.cgi?room=_dcccd_s_6903_1

1. You will click on the link and the Wimba Classroom Login window will launch.

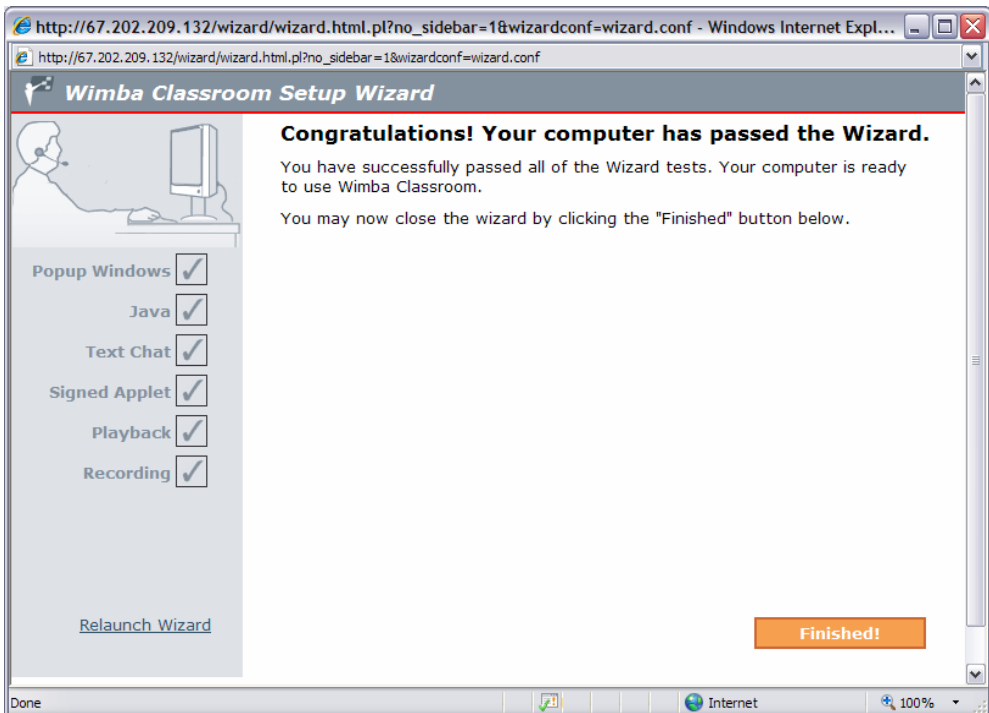


2. Type in your name and select **Enter**.
3. The **Wimba Classroom Setup Wizard** will launch in a new window. This wizard checks your computer to make sure it can run Wimba Classroom.

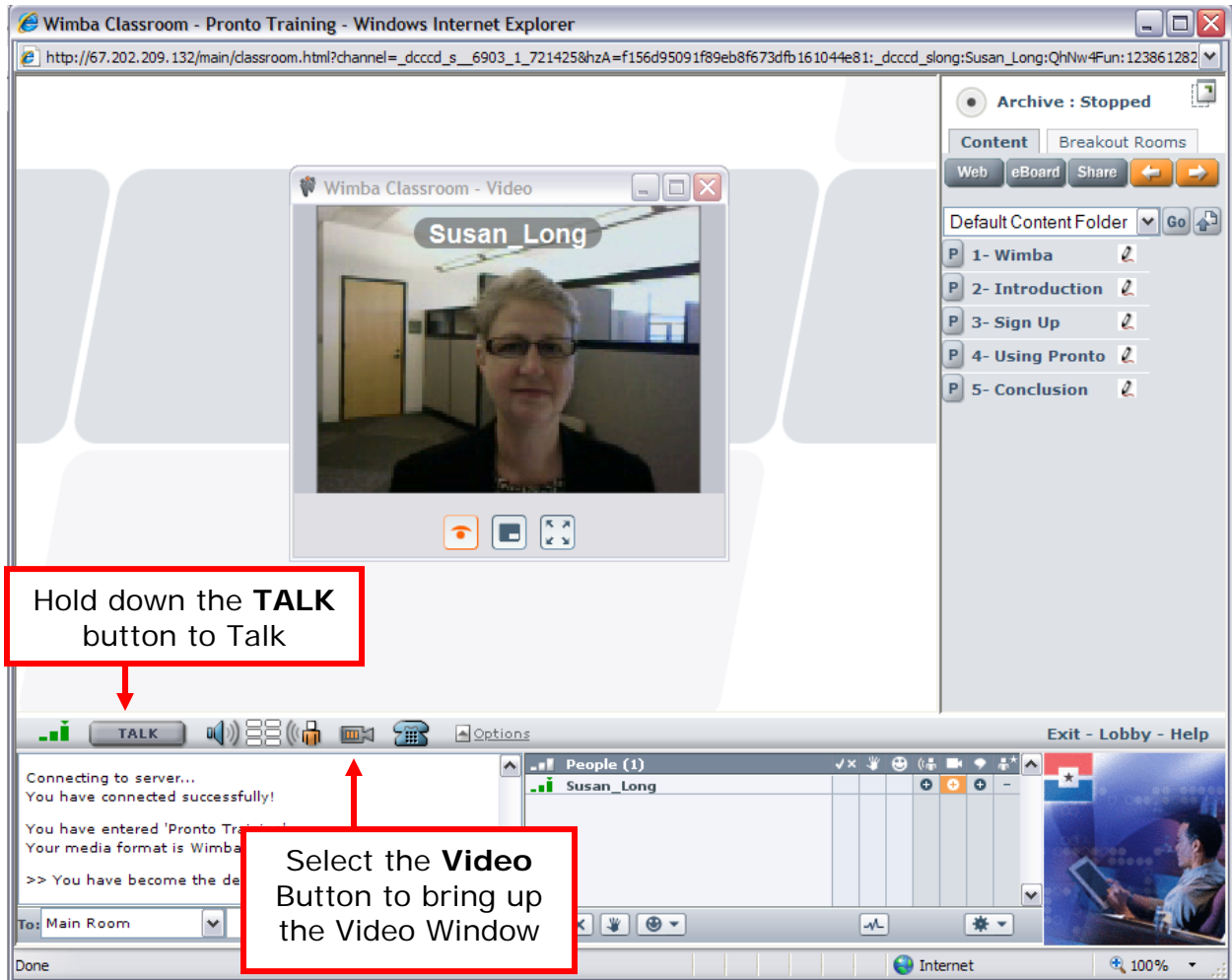
NOTE: The Setup Wizard is the hardest part of the process. Before starting the wizard be sure to turn off all pop-up blockers (you might have multiple toolbars on your Web browser) and plug in your video camera (web cams work great!), microphone, and make sure your speakers are turned on.






4. Select **Start**. The wizard will test the various systems to make sure they are compatible with Wimba. You might have to update your Java.
5. The wizard will take the computer through the various tests. If it discovers a problem, it will let you know the problem and help you troubleshoot a solution.
6. When it is finished you will get a success screen.



7. Select **Finished!** Next you will have to click on the link again to launch Wimba Classroom.



Video Buttons:

-  This starts the video.
-  This removes the preview window.
-  This maximizes the window (press the Esc button to minimize). You can also drag the Video Window larger.

NOTE: The person talking will be the person showing in the Video window.